

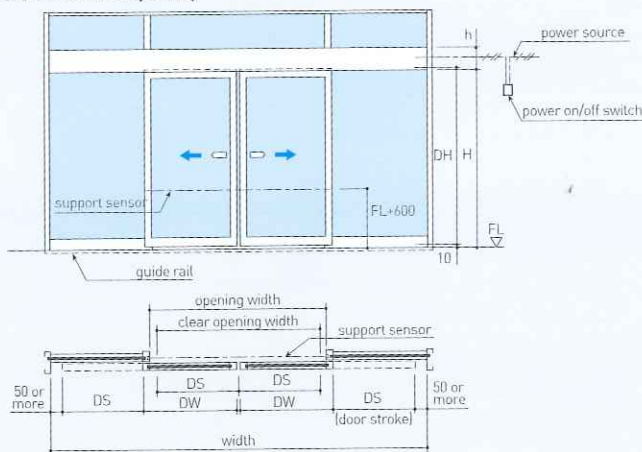
Standard sliding



Door Type	Single					Bi-Parting			
	DSN-60	DSN-75	DSN-150		DSN-250	DSN-60	DSN-75	DSN-150	DSN-250
Door Operator Type	DSN-60	DSN-75	DSN-150		DSN-250	DSN-60	DSN-75	DSN-150	DSN-250
Applicable Door Mass x Door Qty (kg)	75 x 1	100 x 1	120 x 1	150 x 1*2	250 x 1	60 x 2	85 x 2	120 x 2	150 x 2*2
Applicable Door Area : DW×DH (m²)	2.2	2.8	3.3		5	1.8	2.6	3.0	5
Applicable Door Width : DW (mm)	650 -2500				1200 ~3100	650 -2500			
Applicable Door Height : DH (mm)	---				---	---			
Ratio of Door Height / Width : DH / DW	Max. 4.0				Max. 3.0	Max. 4.0			
Power Supply	100V AC ± 10%, 50 / 60Hz, 5A				100V AC ± 10%, 50 / 60Hz, 10A	100V AC ± 10%, 50 / 60Hz, 5A			
Average Door Operation Speed (m/sec)	0.4 or less (Adjustable) *1				---	0.4 or less (Adjustable) *1			
Maximum Endurance Wind Speed (m/sec)	15				---	15			

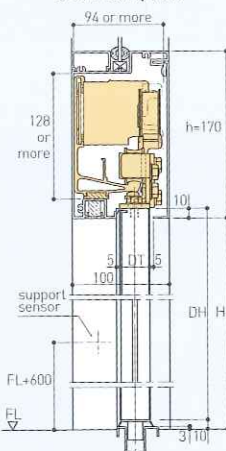
*1 Operation speed between 0 mm and 600 mm *2 Only for DSN-150 F15

Dimension(mm)



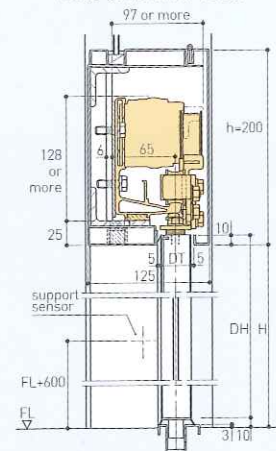
Concealed side mount for Aluminum sash

DSN-60N/75N



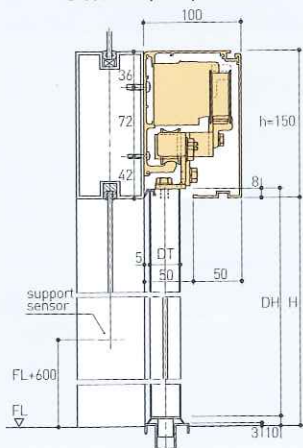
Concealed flat bar mount for Stainless steel sash

DSN-60N/75N/150N



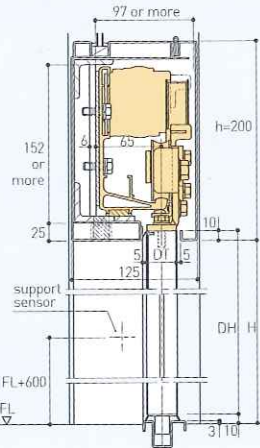
Surface mount

DSN-60S/75S/150S



Concealed flat bar mount for Stainless steel sash

DSN-75F/150F12/150F15



Concealed flat bar mount for Stainless steel sash

DSN-250

